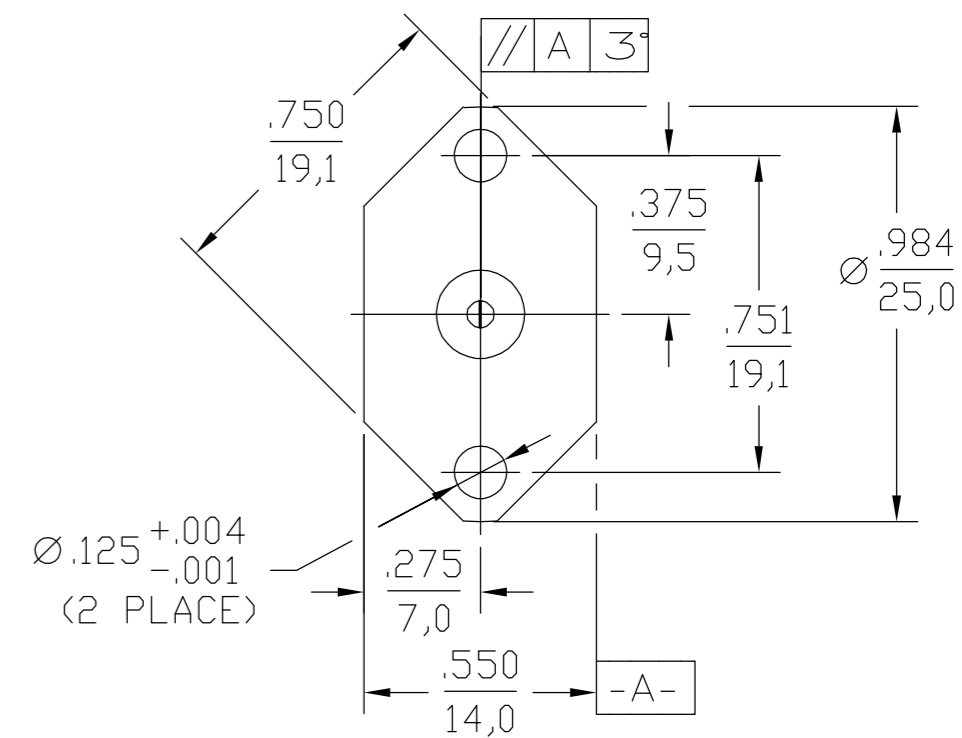
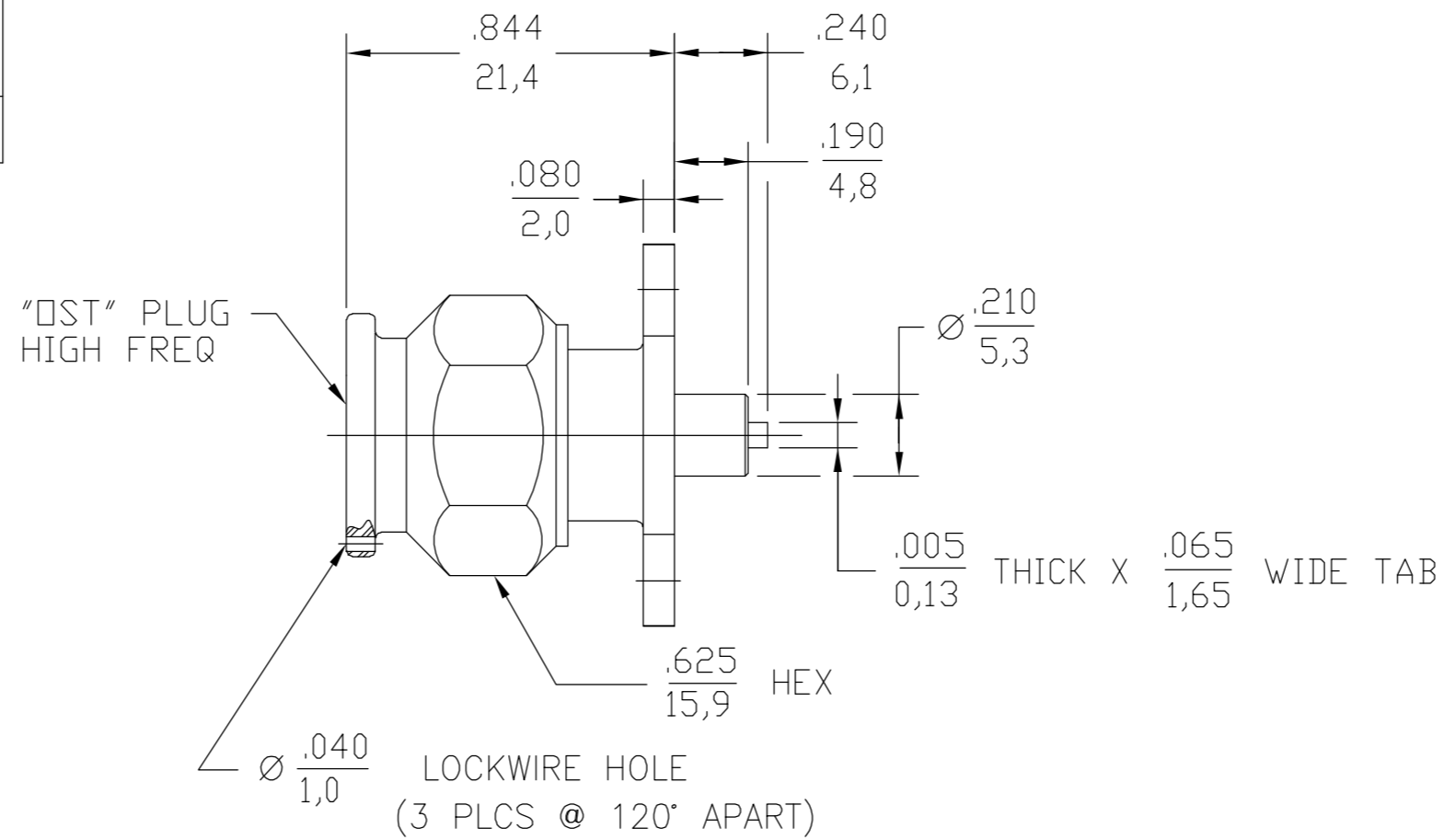


THIS DRAWING IS UNPUBLISHED. RELEASED FOR PUBLICATION		
© COPYRIGHT BY TYCO ELECTRONICS CORPORATION. ALL RIGHTS RESERVED.		
HOUSING COUPLING NUT	STAINLESS STEEL PER ASTM-A484 AND ASTM-A582, TYPE 303	PASSIVATE PER AMS 2700
DIELECTRIC	PTFE FLUOROCARBON PER ASTM-D-1457	N/A
CENTER CONTACT	BERYLLIUM COPPER PER ASTM-B-196 OR ASTM-B-197, ALLOY C17300, CONDITION H	GOLD PLATE PER ASTM-B-488
RETAINING RING	BERYLLIUM COPPER PER ASTM-B-194, ALLOY C17200, CONDITION H	N/A
GASKET	SILICONE RUBBER PER ZZ-R-765	N/A
COMPONENT	MATERIAL	FINISH

LOC	DIST	REVISIONS					
DF	X5	P	LTR	DESCRIPTION	DATE	DWN	APVD
		B		REV PER ECO-06-006740	23MAR06	PY	WM



DESIGN CONTROL REQUIRED

ELECTRICAL	MECHANICAL	ENVIRONMENTAL
Nominal Impedance (Ohms) <u>50</u>	Interface Dimensions	TEMPERATURE RATING <u>-65 TO +125°C</u>
Frequency Range (GHz) <u>DC to 18.0</u>	SCD # <u>1023400P Fig. 2</u>	Vibration MIL-STD-202, Method
Volt Rating (VRMS MAX)	Recommended Mating	204, Condition B
@ Sea Level <u>500</u>	Torque <u>12-15 In-Lbs</u>	Shock MIL-STD-202, Method 213,
VSWR <u>1.09+0.009f(GHz)</u>	Mating Characteristics:	Condition I
Insertion Loss (dB MAX) <u>.06 @ 1.0-1.2 GHz</u>	Insertion (MAX Lbs) <u>2.0</u>	Moisture Resistance MIL-STD-202,
RF Leakage (dB MIN) <u>60 @ 1.0 GHz</u>	Withdrawal (MIN Oz) <u>2.0</u>	Method 106. Insulation
Corona, 70,000 Ft (VRMS MIN) <u>375</u>	Force to Engage and	resistance shall be at least
Dielectric Withstanding Voltage	Disengage (In-Lbs MAX) <u>2.0</u>	200 Meg Ohms within 5 minutes
(VRMS MIN) @ Sea Level <u>1,500</u>	Center Contact Captivation	of removal from humidity.
Contact Resistance (Milliohms MAX)	Axial (Lbs) <u>6.0</u>	Corrosion - MIL-STD-202, Method
Center Contact <u>2.0</u>	Radial (In-Oz) <u>4.0</u>	101, Condition B, 5% salt spray
Outer Contact <u>2.0</u>	Cable Retention	
Cable to Housing <u>N/A</u>	Axial Force (Lbs) <u>N/A</u>	
RF High Potential @ Sea Level	Torque (In-Oz) <u>N/A</u>	
(VRMS MIN @ 5 MHz) <u>1,000</u>	Weight (Grams) <u>TBD</u>	
I.R.(Megohms MIN) <u>5,000</u>		

.XXX = in
XX.X = mm (REF)

1329537-1
PART NO.

THIS DRAWING IS A CONTROLLED DOCUMENT.		DWN	22MAR06	 Tyco Electronics Corporation Harrisburg, Pa 17105-3608
		CHK	23MAR06	
		APVD	23MAR06	
		PRODUCT SPEC		
DIMENSIONS: INCHES		TOLERANCES UNLESS OTHERWISE SPECIFIED:		NAME
		0 PLC	± -	OST 18 GHz 2 HOLE FLANGE MOUNT
		1 PLC	± -	PLUG RECEPTACLE - TAB TERMINAL
		2 PLC	± -	
		3 PLC	± -	
		4 PLC	± -	
		ANGLES	± -	
MATERIAL		FINISH		SIZE
				CAGE CODE
				DRAWING NO
				RESTRICTED TO
				A2 00779 C=1329537
CUSTOMER DRAWING		WEIGHT	-	SCALE
				1:1
				SHEET
				1 OF 1
				REV
				B